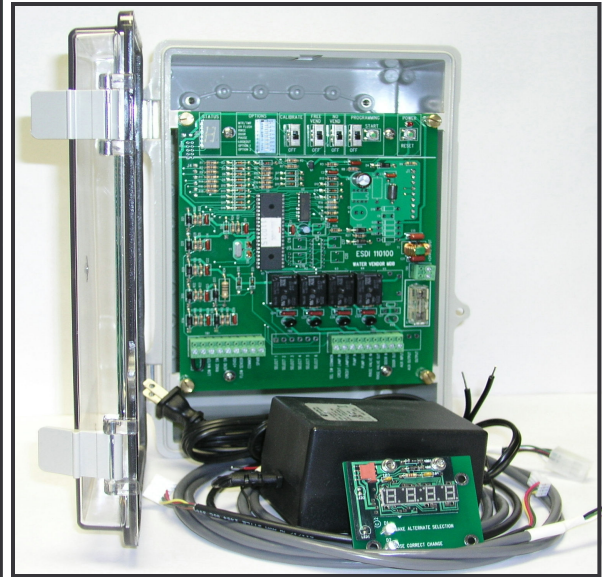
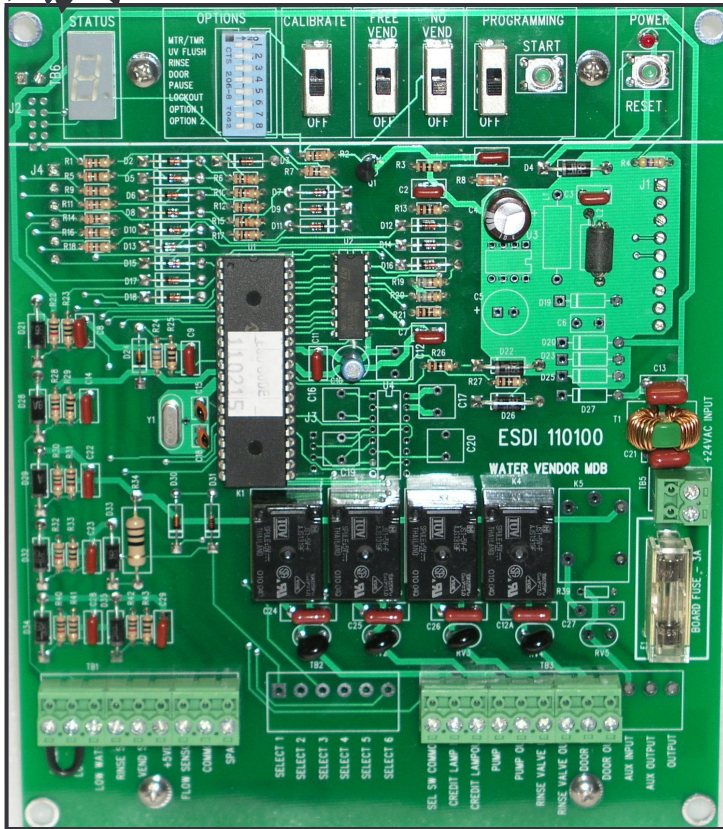




Water Vending Machine Controller - MultiPrice
Incorporates NAMA® Multi-Drop Bus (MDB) Protocol
ESDI Model 110100



ePort
 Compatible



See Price List for Current Pricing

The ESDI Model 110100 MultiPrice Water Vending Machine Controller is our newest electronics assembly that performs all of the functions necessary to control an unsupervised bulk water vending machine. This extremely reliable controller interfaces with most coin acceptors, bill validators, card readers, and other payment devices conforming to NAMA's Multi-Drop Bus (MDB) protocol. It incorporates many new features & options that make it compatible for most vending machine applications. Provides precise & reliable vending using a flow sensor, or onboard timer. Requires no special equipment to program prices & retrieve sales data.

The Model 110100 is assembled in the USA, and is designed & manufactured in compliance with UL-508*, and IEC Standard 1000-4-4 part 4 for EMI noise interference. (*Not UL listed)

Features & Onboard Options:

- **Vends Six (6) Water Volumes:** Water volumes set & stored in memory using simple "Calibration Mode".
- **Data Retrieval Capability:** Using MDB, or industry standard DEX/UCS hand held computer (HHC).
- **Optional Bottle Rinse Cycle:** Activates after selection & prior to vending. Rinse water = 1/16th Volume.
- **Optional Pause Mode:** Allows vending to pause up to one minute, so customer can change containers.
- **Optional Door Control:** Activates 2 sec prior to vending & deactivates 1 sec after vending. (Many Uses.)
- **Controls Several Vend Stations:** Using only one payment device. Requires additional slave boards.
- **Optional UV Flush Cycle:** Removes accumulated hot water from UV lamp if idle for 30 minutes.
- **Maximum Run Timer:** Stops pump and terminates vending if the maximum vending time is exceeded.
- **Low Water Monitor:** Blocks coin deposits until water is once again present. (Set float above 5 gallons.)
- **UV Lamp Shut Down and Lockout Input:** Blocks coin deposits until manual reset.
- **Relay Contacts are Isolated:** And rated for any voltage up to 240 VAC, 3 Amps Max.
- **Board Size:** 7.5" X 6.25" X 2.8".
- **Enclosure Size:** 11.5" X 7.75" X 6", NEMA 4 Indoor Rated.

All of our products come with a Two-year Warranty. Your satisfaction is guaranteed.